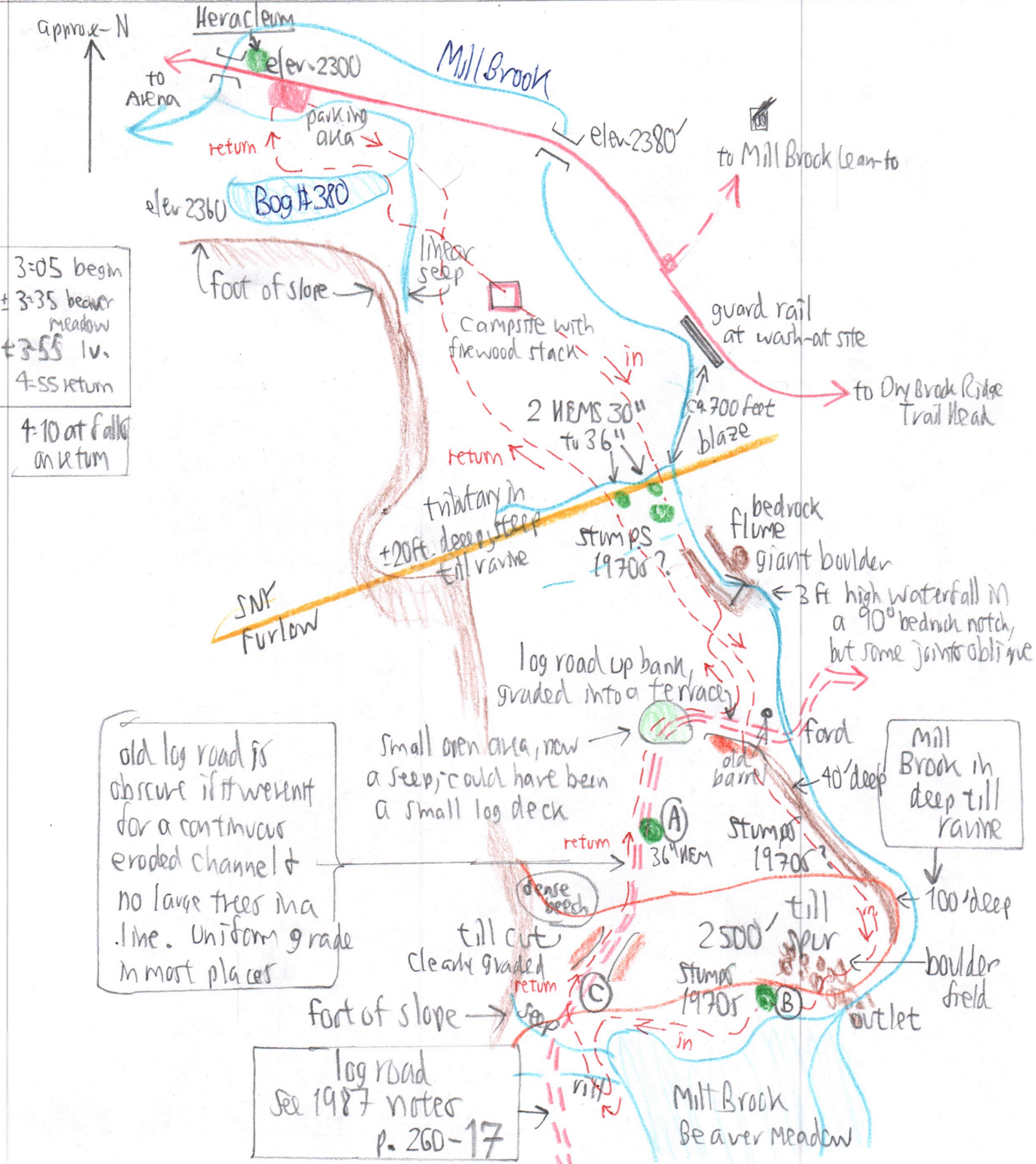


Bog #380 to Mill Brook Beaver Meadow

260-59
7/3/07

As a follow-up to 9/21/06 excursion on p. 260-58



More observations:

(A) 36⁴NEM. Several more in the area e.g. along the blaze and between #380 & the road. Probably no fanners, but no 1^o hardwoods either.

(B) 36⁴ dead ^{lone} e-white pine snag, about 30' high & broken off Ilex mont nearby.

(C) Scattered white ash

Stumps are not as decomposed as those on Balsam Lake Mtn & Graham Mtn trails from 1960s cutting. These look 1970s. See 1987 field notes (p. 260-77) for ^{MK} impressions then on age.

The beaver meadow has a few widely-scattered RM saplings & 1 YB sapling poking up through the meadowweed & graminoids.

The north shore has some pioneering thickets (see p. 260-58).

Boreal ground cover (260-60)

persists into N-hardwood-hemlock forests quite commonly, although not as abundant as Under spruce-fir. Under hemlock-N hardwoods along Mill Brook are:

OX in flower	AN
LL	AA
\$ int	
VA	
TB	

(Coptis in #380 only)

CB rare - a few

plants between the blaze & the waterfall. Even one near Campsite.

Most of these are above 2800 in the woods, too, in spots not pastured. They are NOT limited to the crest of Bellecayne, DBR & MBR > 3000'.

Mixed with these boreals are some typical N-hardwood spp, e.g.

MITCH
ARIS
STREPT
MEDEOLA

Defoliation - a small area, barely an acre, on SE side of Mill Brook Road NE of the pass, elev ca. 2400'. More at head of Reservoir Hollow at ± 2600 to 2900'